

# Understanding Your PSAT/NMSQT Results

## 4 Major Parts of Your PSAT/NMSQT Results

Your Scores

Your Skills

Your Answers

Next Steps

## 3 Test Sections

Critical Reading

Mathematics

Writing Skills

Name: STUDENT, MIA B      Year: 2011    Grade: 11    School Code: 123456    National Code: 00    Student Copy

Score Range    Scores in this

Organization & Ideas  
2 of 8 questions correct (2 omitted)

Data, Statistics & Probability  
6 of 8 questions correct (1 omitted)

Correctly Formed Sentences  
1 of 6 questions correct (4 omitted)

Understanding Literary Elements

Relationships of Sentences & Paragraphs

Get suggestions for improving your skills before you take the SAT.

Online Access Code  
**A02670146P**

Next Steps

On test day, you told us that you're interested in **Support & Return Administration!** **Management**. To learn more about college majors, visit MyCollege QuickStart™. There you can also:

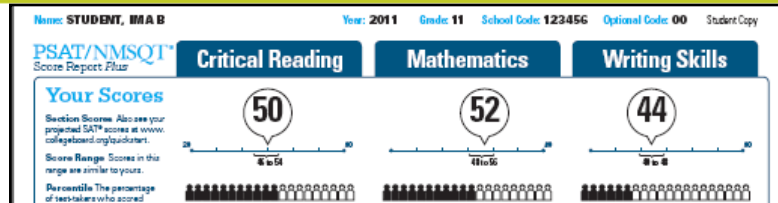
- Learn about related careers
- Search for colleges
- Take a personality test

Take the next step today! Go to [www.collegeboard.org/quickstart](http://www.collegeboard.org/quickstart) and sign in using your code below.

Online Access Code  
**A#2670146P**



# National Merit Scholarship Corporation Information



**National Merit Scholarship Corporation**

National Merit Scholarship Corporation (NMSC) uses a Selection Index based on PSAT/NMSQT® scores as an initial screen of over 1.5 million students who enter its scholarship programs. (See reverse for more information.)

**Your Selection Index**  
Sum of scores in critical reading, mathematics and writing skills.  
**146**

**Percentile**  
Compares your performance with college-bound juniors.  
**47**

**Entry Requirements**  
(Information you provided on your answer sheet.)

High school student: **Yes**

U. S. citizenship: **Yes**

Year to complete high school and enroll full-time in college: **2013**

Years to be spent in grades 9–12: **4**

**Eligibility Information**

If your Selection Index places you among the 55,000 high scorers who qualify for program recognition, you will be notified next September.

The Selection Index is the sum of your critical reading, mathematics and writing skills scores.

If it has an asterisk, you do not meet all of the eligibility requirements for the competition.

The Percentile compares your performance to that of other college-bound juniors.

The Entry Requirements section displays information you provided on your answer sheet.

PSAT/NMSQT Score Report Plus

CRITICAL READING

6 of 8 questions correct (4 omitted)

RELATIONSHIPS OF SENTENCES & PARAGRAPHS

2 of 6 questions correct (3 omitted)

Question	Correct Answer	Your Answer
1	D	✓
2	G	✓
3	G	✓
4	C	✓
5	D	✓
6	D	✓
7	C	○
8	A	✓
9	D	✓
10	C	✓
11	B	○
12	C	✓
13	D	✓
14	A	○
15	D	○
16	A	○

Question	Correct Answer	Your Answer
1	A	✓
2	C	✓
3	A	✓
4	B	✓
5	G	○
6	D	○
7	A	○
8	C	○
9	C	○
10	A	○
11	B	○
12	B	○
13	C	○
14	D	○
15	G	○
16	B	○
17	D	○
18	A	○
19	C	○
20	C	○

Correct Answer: 7 ✓ m

Your Answer: 3 m

21 8.5 or 9.0 0 m

22 1000 0 m

23 10, 12, 14, or 16 ✓ h

24 25 or 10 0 h

25 30 0 h

26 104 50.9 h

27 48 8.2 m

28 8 10 h

Take the next step today! Go to [www.collegeboard.org/quickstart](http://www.collegeboard.org/quickstart) and sign in using your code below.

Online Access Code: **A#267014CP**

# Your Skills

## Your Skills

These skill categories can help you understand your score and focus your study efforts before you take the SAT.

To learn more about your skills and review suggestions for improvement based on your test performance, visit [www.collegeboard.com/quickstart](http://www.collegeboard.com/quickstart) and sign in using your code below.

Online Access Code

**A02670146P**

### Determining the Meaning of Words

9 of 15 questions correct (0 omitted)

### Author's Craft: Style, Tone & Technique

3 of 5 questions correct (0 omitted)

### Reasoning & Inference

8 of 10 questions correct (2 omitted)

### Organization & Ideas

2 of 8 questions correct (2 omitted)

### Understanding Literary Elements

4 of 10 questions correct (0 omitted)

### Number & Operations

12 of 15 questions correct (1 omitted)

### Algebra & Functions

5 of 5 questions correct (0 omitted)

### Geometry & Measurement

8 of 10 questions correct (2 omitted)

### Data, Statistics & Probability

6 of 8 questions correct (1 omitted)



Get suggestions for improving your skills before you take the SAT.  
[www.collegeboard.com/quickstart](http://www.collegeboard.com/quickstart)

### Grammatical Relationships between Words

3 of 12 questions correct (1 omitted)

### Words & Phrases Used to Modify or Compare

1 of 5 questions correct (2 omitted)

### Phrases & Clauses

6 of 10 questions correct (2 omitted)

### Correctly Formed Sentences

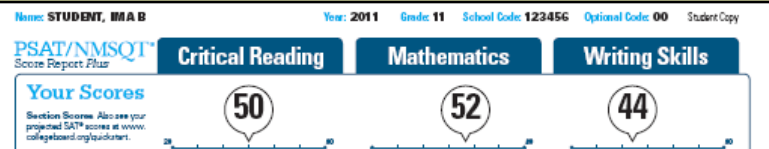
1 of 6 questions correct (4 omitted)

### Relationships of Sentences & Paragraphs

2 of 6 questions correct (3 omitted)

See how you did on each skill. The same skills are tested on the SAT.

You can try hundreds of practice questions, organized by skill, online in My College QuickStart ([www.collegeboard.org/quickstart](http://www.collegeboard.org/quickstart)).



download for a copy of your

• Incomplete • In Used

14 B A m 24 B ✓ m 18 A D h 28 A B m

20 C ✓ m

15 A m 25 A D •

16 B ✓ m 26 C ✓ h

17 D ✓ • 27 B ✓ m

18 A B m 28 C ✓ h

19 C B m 29 C ✓ h

20 C ✓ m

Find out why you missed questions.  
[www.collegeboard.com/quickstart](http://www.collegeboard.com/quickstart)

### Next Steps

Go online to see your projected SAT scores, learn how to improve them, and find critical college and career planning information.

On test day, you told us that you're interested in Sport & Fitness Administration! Management.

To learn more about college majors, visit My College QuickStart™. There you can also:

- Learn about related careers
- Search for colleges
- Take a personality test

Take the next step today! Go to [www.collegeboard.org/quickstart](http://www.collegeboard.org/quickstart) and sign in using your code below.

Online Access Code  
**A02670146P**

# Your Answers

You will get your test book back with your PSAT/NMSQT results, so that you can review the questions.

You can also review each test question in My College QuickStart.

Name: **STUDENT, IMA B** Year: **2011** Grade: **11** School Code: **123456** Optional Code: **00** Student Copy

PSAT/NMSQT® Score Report Plus

Question	Correct Answer	Your Answer	Difficulty
1	A	✓	e
2	B	✓	e
3	A	C	m
4	C	A	h
5	B	E	h
6	D	✓	e
7	B	✓	m
8	D	o	e
9	B	✓	m
10	E	B	h
11	D	✓	h
12	C	✓	m
13	A	✓	m
14	B	A	m
15	A	✓	e
16	C	✓	m
17	A	✓	e
18	E	✓	m
19	B	✓	m
20	B	E	m
21	E	✓	m
22	D	B	h
23	E	✓	m
24	A	✓	m

**Critical Reading**

**Mathematics**

**Writing Skills**

**52**

**44**

You scored higher than 57% of juniors. You scored higher than 39% of juniors.

**Eligibility Information:** If your Selection Index places you among the 50,000 high scorers who qualify for program recognition, you will be notified next September.

**Number & Operations:** 3 of 15 questions correct (1 omitted)

**Algebra & Functions:** 1 of 5 questions correct (0 omitted)

**Geometry & Measurement:** 1 of 14 questions correct (2 omitted)

**Data, Statistics & Probability:** 1 of 8 questions correct (1 omitted)

**Verbal Relationships between Words:** 3 of 12 questions correct (1 omitted)

**Words & Phrases Used to Modify or Compare:** 1 of 5 questions correct (2 omitted)

**Phrases & Clauses:** 6 of 10 questions correct (2 omitted)

**Correctly Formed Sentences:** 1 of 6 questions correct (1 omitted)

**Relationships of Sentences & Paragraphs:** 2 of 6 questions correct (3 omitted)

Get suggestions for improving your skills before you take the SAT. [www.collegeboard.org/quickstart](http://www.collegeboard.org/quickstart)

Question	Correct Answer	Your Answer	Difficulty
1	D	✓	m
2	E	✓	m
3	E	✓	m
4	C	✓	h
5	E	✓	h
6	E	✓	h
7	C	✓	m
8	A	✓	m
9	B	✓	m
10	C	✓	m
11	B	✓	m
12	E	✓	m
13	D	✓	m
14	D	✓	m
15	E	✓	m
16	E	✓	m
17	D	✓	m
18	E	✓	m
19	E	✓	m
20	E	✓	m
21	E	✓	m
22	E	✓	m
23	E	✓	m
24	E	✓	m

Correct Answer    Your Answer

20   7   ✓   m

21   3   ✓   m

22   8.5 or 9.2   ✓   m

23   1000   ✓   m

24   10, 12, 14, or 16   ✓   h

25   25 or 15   ✓   h

26   20   ✓   h

27   104   ✓   h

28   40   ✓   h

29   104   ✓   h

30   50.9   ✓   h

31   45   ✓   h

32   2   ✓   h

33   7   ✓   m

34   3   ✓   m

35   8.5 or 9.2   ✓   m

36   1000   ✓   m

37   10, 12, 14, or 16   ✓   h

38   25 or 15   ✓   h

39   20   ✓   h

40   104   ✓   h

41   40   ✓   h

42   2   ✓   h

43   7   ✓   m

44   3   ✓   m

45   8.5 or 9.2   ✓   m

46   1000   ✓   m

47   10, 12, 14, or 16   ✓   h

48   25 or 15   ✓   h

49   20   ✓   h

50   104   ✓   h

51   40   ✓   h

52   2   ✓   h

53   7   ✓   m

54   3   ✓   m

55   8.5 or 9.2   ✓   m

56   1000   ✓   m

57   10, 12, 14, or 16   ✓   h

58   25 or 15   ✓   h

59   20   ✓   h

60   104   ✓   h

61   40   ✓   h

62   2   ✓   h

63   7   ✓   m

64   3   ✓   m

65   8.5 or 9.2   ✓   m

66   1000   ✓   m

67   10, 12, 14, or 16   ✓   h

68   25 or 15   ✓   h

69   20   ✓   h

70   104   ✓   h

71   40   ✓   h

72   2   ✓   h

73   7   ✓   m

74   3   ✓   m

75   8.5 or 9.2   ✓   m

76   1000   ✓   m

77   10, 12, 14, or 16   ✓   h

78   25 or 15   ✓   h

79   20   ✓   h

80   104   ✓   h

81   40   ✓   h

82   2   ✓   h

83   7   ✓   m

84   3   ✓   m

85   8.5 or 9.2   ✓   m

86   1000   ✓   m

87   10, 12, 14, or 16   ✓   h

88   25 or 15   ✓   h

89   20   ✓   h

90   104   ✓   h

91   40   ✓   h

92   2   ✓   h

93   7   ✓   m

94   3   ✓   m

95   8.5 or 9.2   ✓   m

96   1000   ✓   m

97   10, 12, 14, or 16   ✓   h

98   25 or 15   ✓   h

99   20   ✓   h

100   104   ✓   h

101   40   ✓   h

102   2   ✓   h

103   7   ✓   m

104   3   ✓   m

105   8.5 or 9.2   ✓   m

106   1000   ✓   m

107   10, 12, 14, or 16   ✓   h

108   25 or 15   ✓   h

109   20   ✓   h

110   104   ✓   h

111   40   ✓   h

112   2   ✓   h

113   7   ✓   m

114   3   ✓   m

115   8.5 or 9.2   ✓   m

116   1000   ✓   m

117   10, 12, 14, or 16   ✓   h

118   25 or 15   ✓   h

119   20   ✓   h

120   104   ✓   h

121   40   ✓   h

122   2   ✓   h

123   7   ✓   m

124   3   ✓   m

125   8.5 or 9.2   ✓   m

126   1000   ✓   m

127   10, 12, 14, or 16   ✓   h

128   25 or 15   ✓   h

129   20   ✓   h

130   104   ✓   h

131   40   ✓   h

132   2   ✓   h

133   7   ✓   m

134   3   ✓   m

135   8.5 or 9.2   ✓   m

136   1000   ✓   m

137   10, 12, 14, or 16   ✓   h

138   25 or 15   ✓   h

139   20   ✓   h

140   104   ✓   h

141   40   ✓   h

142   2   ✓   h

143   7   ✓   m

144   3   ✓   m

145   8.5 or 9.2   ✓   m

146   1000   ✓   m

147   10, 12, 14, or 16   ✓   h

148   25 or 15   ✓   h

149   20   ✓   h

150   104   ✓   h

151   40   ✓   h

152   2   ✓   h

153   7   ✓   m

154   3   ✓   m

155   8.5 or 9.2   ✓   m

156   1000   ✓   m

157   10, 12, 14, or 16   ✓   h

158   25 or 15   ✓   h

159   20   ✓   h

160   104   ✓   h

161   40   ✓   h

162   2   ✓   h

163   7   ✓   m

164   3   ✓   m

165   8.5 or 9.2   ✓   m

166   1000   ✓   m

167   10, 12, 14, or 16   ✓   h

168   25 or 15   ✓   h

169   20   ✓   h

170   104   ✓   h

171   40   ✓   h

172   2   ✓   h

173   7   ✓   m

174   3   ✓   m

175   8.5 or 9.2   ✓   m

176   1000   ✓   m

177   10, 12, 14, or 16   ✓   h

178   25 or 15   ✓   h

179   20   ✓   h

180   104   ✓   h

181   40   ✓   h

182   2   ✓   h

183   7   ✓   m

184   3   ✓   m

185   8.5 or 9.2   ✓   m

186   1000   ✓   m

187   10, 12, 14, or 16   ✓   h

188   25 or 15   ✓   h

189   20   ✓   h

190   104   ✓   h

191   40   ✓   h

192   2   ✓   h

193   7   ✓   m

194   3   ✓   m

195   8.5 or 9.2   ✓   m

196   1000   ✓   m

197   10, 12, 14, or 16   ✓   h

198   25 or 15   ✓   h

199   20   ✓   h

200   104   ✓   h

201   40   ✓   h

202   2   ✓   h

203   7   ✓   m

204   3   ✓   m

205   8.5 or 9.2   ✓   m

206   1000   ✓   m

207   10, 12, 14, or 16   ✓   h

208   25 or 15   ✓   h

209   20   ✓   h

210   104   ✓   h

211   40   ✓   h

212   2   ✓   h

213   7   ✓   m

214   3   ✓   m

215   8.5 or 9.2   ✓   m

216   1000   ✓   m

217   10, 12, 14, or 16   ✓   h

218   25 or 15   ✓   h

219   20   ✓   h

220   104   ✓   h

221   40   ✓   h

222   2   ✓   h

223   7   ✓   m

224   3   ✓   m

225   8.5 or 9.2   ✓   m

226   1000   ✓   m

227   10, 12, 14, or 16   ✓   h

228   25 or 15   ✓   h

229   20   ✓   h

230   104   ✓   h

231   40   ✓   h

232   2   ✓   h

233   7   ✓   m

234   3   ✓   m

235   8.5 or 9.2   ✓   m

236   1000   ✓   m

237   10, 12, 14, or 16   ✓   h

238   25 or 15   ✓   h

239   20   ✓   h

240   104   ✓   h

241   40   ✓   h

242   2   ✓   h

243   7   ✓   m

244   3   ✓   m

245   8.5 or 9.2   ✓   m

246   1000   ✓   m

247   10, 12, 14, or 16   ✓   h

248   25 or 15   ✓   h

249   20   ✓   h

250   104   ✓   h

251   40   ✓   h

252   2   ✓   h

253   7   ✓   m

254   3   ✓   m

255   8.5 or 9.2   ✓   m

256   1000   ✓   m

257   10, 12, 14, or 16   ✓   h

258   25 or 15   ✓   h

259   20   ✓   h

260   104   ✓   h

261   40   ✓   h

262   2   ✓   h

263   7   ✓   m

264   3   ✓   m

265   8.5 or 9.2   ✓   m

266   1000   ✓   m

267   10, 12, 14, or 16   ✓   h

268   25 or 15   ✓   h

269   20   ✓   h

270   104   ✓   h

271   40   ✓   h

272   2   ✓   h

273   7   ✓   m

274   3   ✓   m

275   8.5 or 9.2   ✓   m

276   1000   ✓   m

277   10, 12, 14, or 16   ✓   h

278   25 or 15   ✓   h

279   20   ✓   h

280   104   ✓   h

281   40   ✓   h

282   2   ✓   h

283   7   ✓   m

284   3   ✓   m

285   8.5 or 9.2   ✓   m

286   1000   ✓   m

287   10, 12, 14, or 16   ✓   h

288   25 or 15   ✓   h

289   20   ✓   h

290   104   ✓   h

291   40   ✓   h

292   2   ✓   h

293   7   ✓   m

294   3   ✓   m

295   8.5 or 9.2   ✓   m

296   1000   ✓   m

297   10, 12, 14, or 16   ✓   h

298   25 or 15   ✓   h

299   20   ✓   h

300   104   ✓   h

301   40   ✓   h

302   2   ✓   h

303   7   ✓   m

304   3   ✓   m

305   8.5 or 9.2   ✓   m

306   1000   ✓   m

307   10, 12, 14, or 16   ✓   h

308   25 or 15   ✓   h

309   20   ✓   h

310   104   ✓   h

311   40   ✓   h

312   2   ✓   h

313   7   ✓   m

314   3   ✓   m

315   8.5 or 9.2   ✓   m

316   1000   ✓   m

317   10, 12, 14, or 16   ✓   h

318   25 or 15   ✓   h

319   20   ✓   h

320   104   ✓   h

321   40   ✓   h

322   2   ✓   h

323   7   ✓   m

324   3   ✓   m

325   8.5 or 9.2   ✓   m

326   1000   ✓   m

327   10, 12, 14, or 16   ✓   h

328   25 or 15   ✓   h

329   20   ✓   h

330   104   ✓   h

331   40   ✓   h

332   2   ✓   h

333   7   ✓   m

334   3   ✓   m

335   8.5 or 9.2   ✓   m

336   1000   ✓   m

337   10, 12, 14, or 16   ✓   h

338   25 or 15   ✓   h

339   20   ✓   h

340   104   ✓   h

341   40   ✓   h

342   2   ✓   h

343   7   ✓   m

344   3   ✓   m

345   8.5 or 9.2   ✓   m

346   1000   ✓   m

347   10, 12, 14, or 16   ✓   h

348   25 or 15   ✓   h

349   20   ✓   h

350   104   ✓   h

351   40   ✓   h

352   2   ✓   h

353   7   ✓   m

354   3   ✓   m

355   8.5 or 9.2   ✓   m

356   1000   ✓   m

357   10, 12, 14, or 16   ✓   h

358   25 or 15   ✓   h

359   20   ✓   h

360   104   ✓   h

361   40   ✓   h

362   2   ✓   h

363   7   ✓   m

364   3   ✓   m

365   8.5 or 9.2   ✓   m

366   1000   ✓   m

367   10, 12, 14, or 16   ✓   h

368   25 or 15   ✓   h

369   20   ✓   h

370   104   ✓   h

371   40   ✓   h

372   2   ✓   h

373   7   ✓   m

374   3   ✓   m

375   8.5 or 9.2   ✓   m

376   1000   ✓   m

377   10, 12, 14, or 16   ✓   h

378   25 or 15   ✓   h

379   20   ✓   h

380   104   ✓   h

381   40   ✓   h

382   2   ✓   h

383   7   ✓   m

384   3   ✓   m

385   8.5 or 9.2   ✓   m

386   1000   ✓   m

387   10, 12, 14, or 16   ✓   h

388   25 or 15   ✓   h

389   20   ✓   h

390   104   ✓   h

391   40   ✓   h

392   2   ✓   h

393   7   ✓   m

394   3   ✓   m

395   8.5 or 9.2   ✓   m

396   1000   ✓   m

397   10, 12, 14, or 16   ✓   h

398   25 or 15   ✓   h

399   20   ✓   h

400   104   ✓   h

401   40   ✓   h

402   2   ✓   h

403   7   ✓   m

404   3   ✓   m

405   8.5 or 9.2   ✓   m

406   1000   ✓   m

407   10, 12, 14, or 16   ✓   h

408   25 or 15   ✓   h

409   20   ✓   h

410   104   ✓   h

411   40   ✓   h

412   2   ✓   h

413   7   ✓   m

414   3   ✓   m

415   8.5 or 9.2   ✓   m

416   1000   ✓   m

417   10, 12, 14, or 16   ✓   h

418   25 or 15   ✓   h

419   20   ✓   h

420   104   ✓   h

421   40   ✓   h

422   2   ✓   h

423   7   ✓   m

424   3   ✓   m

425   8.5 or 9.2   ✓   m

426   1000   ✓   m

427   10, 12, 14, or 16   ✓   h

428   25 or 15   ✓   h

429   20   ✓   h

430   104   ✓   h

431   40   ✓   h

432   2   ✓   h

433   7   ✓   m

434   3   ✓   m

435   8.5 or 9.2   ✓   m

436   1000   ✓   m

437   10, 12, 14, or 16   ✓   h

438   25 or 15   ✓   h

439   20   ✓   h

440   104   ✓   h

441   40   ✓   h

442   2   ✓   h

443   7   ✓   m

444   3   ✓   m

445   8.5 or 9.2   ✓   m

446   1000   ✓   m

447   10, 12, 14, or 16   ✓   h

448   25 or 15   ✓   h

449   20   ✓   h

450   104   ✓   h

451   40   ✓   h

452   2   ✓   h

453   7   ✓   m

454   3   ✓   m

455   8.5 or 9.2   ✓   m

456   1000   ✓   m

457   10, 12, 14, or 16   ✓   h

458   25 or 15   ✓   h

459   20   ✓   h

460   104   ✓   h

461   40   ✓   h

462   2   ✓   h

463   7   ✓   m

464   3   ✓   m

465   8.5 or 9.2   ✓   m

466   1000   ✓   m

467   10, 12, 14, or 16   ✓   h

468   25 or 15   ✓   h

469   20   ✓   h

470   104   ✓   h

471   40   ✓   h

472   2   ✓   h

473   7   ✓   m

474   3   ✓   m

475   8.5 or 9.2   ✓   m

476   1000   ✓   m

477   10, 12, 14, or 16   ✓   h

478   25 or 15   ✓   h

479   20   ✓   h

480   104   ✓   h

481   40   ✓   h

482   2   ✓   h

483   7   ✓   m

484   3   ✓   m

485   8.5 or 9.2   ✓   m

486   1000   ✓   m

487   10, 12, 14, or 16   ✓   h

488   25 or 15   ✓   h

489   20   ✓   h

490   104   ✓   h

491   40   ✓   h

492   2   ✓   h

493   7   ✓   m

494   3   ✓   m

495   8.5 or 9.2   ✓   m

496   1000   ✓   m

497   10, 12, 14, or 16   ✓   h

498   25 or 15   ✓   h

499   20   ✓   h

500   104   ✓   h

501   40   ✓   h

502   2   ✓   h

503   7   ✓   m

504   3   ✓   m

505   8.5 or 9.2   ✓   m

506   1000   ✓   m

507   10, 12, 14, or 16   ✓   h

508   25 or 15   ✓   h

509   20   ✓   h

510   104   ✓   h

511   40   ✓   h

512   2   ✓   h

513   7   ✓   m

514   3   ✓   m

515   8.5 or 9.2   ✓   m

516   1000   ✓   m

517   10, 12, 14, or 16   ✓   h

518   25 or 15   ✓   h

519   20   ✓   h

520   104   ✓   h

521   40   ✓   h

522   2   ✓   h

523   7   ✓   m

524   3   ✓   m

525   8.5 or 9.2   ✓   m

526   1000   ✓   m

527   10, 12, 14, or 16   ✓   h

528   25 or 15   ✓   h

529   20   ✓   h

530   104   ✓   h

531   40   ✓   h

532   2   ✓   h

533   7   ✓   m

534   3   ✓   m

535   8.5 or 9.2   ✓   m

536   1000   ✓   m

537   10, 12, 14, or 16   ✓   h

538   25 or 15   ✓   h

539   20   ✓   h

540   104   ✓   h

541   40   ✓   h

542   2   ✓   h

543   7   ✓   m

544   3   ✓   m

545   8.5 or 9.2   ✓   m

546   1000   ✓   m

547   10, 12, 14, or 16   ✓   h

548   25 or 15   ✓   h

549   20   ✓   h

550   104   ✓   h

551

# Your Answers: Student-Produced Responses

Some of the math problems required you to grid in answers instead of selecting an option. For these questions, you will see the correct answer(s) written out.

Name: **STUDENT, MA B** Year: **2011** Grade: **11** School Code: **123456** Optional Code: **00** Student Copy

**PSAT/NMSQT® Score Report Plus**

Critical Reading	Mathematics	Writing Skills
<b>50</b>	<b>52</b>	<b>44</b>
8 to 34	11 to 36	8 to 28
You scored higher than 51% of juniors.	You scored higher than 57% of juniors.	You scored higher than 39% of juniors.

**Your Scores**  
Section Scores: Also see your projected SAT® scores at [www.collegeboard.org/satindex](http://www.collegeboard.org/satindex).  
Score Range: Scores in this range are similar to yours.  
Percentile: The percentage of test-takers who scored below your score.

**National Merit Scholarship Corporation**  
National Merit Scholarship Corporation (NMSC) uses a Selection Index based on PSAT/NMSQT® scores as an initial screen of over 1.5 million students who enter its scholarship programs. (See [www.nmsc.org](http://www.nmsc.org) for more information.)  
**Year Selection Index:** Sum of scores in critical reading, mathematics and writing skills: **156**  
**Percentile:** Compares your performance with college-bound juniors: **47**

**Entry Requirements**  
(Information you provided on your answer sheet)  
High school student: **Yes**  
U.S. citizenship: **Yes**  
Year to complete high school and enroll full-time in college: **2013**  
Year to be spent in grades 9-12: **4**

**Slightly Informative**  
If your Selection Index places you among the 15,000 high scorers who qualify for program recognition, you will be notified next September.

**Your Skills**  
These skill categories can help you understand your score and focus your study efforts before you take the SAT.  
To learn more about your skills and receive suggestions for improvement based on your test performance, visit [www.collegeboard.org/quickstart](http://www.collegeboard.org/quickstart) and sign your code below.

<b>Decoding the Meaning of Words</b> 9 of 18 questions correct (50% correct)	<b>Number &amp; Operations</b> 12 of 16 questions correct (75% correct)	<b>Grammatical Relationships between Words</b> 9 of 12 questions correct (75% correct)
<b>Author's Craft: Style, Tone &amp; Technique</b> 3 of 6 questions correct (50% correct)	<b>Algebra &amp; Functions</b> 6 of 6 questions correct (100% correct)	<b>Words &amp; Phrases Used to Modify or Compare</b> 1 of 5 questions correct (20% correct)
<b>Reasoning &amp; Evidence</b> 0 of 0 questions correct (0% correct)	<b>Geometry &amp; Measurement</b> 0 of 0 questions correct (0% correct)	<b>Proofs &amp; Classes</b> 0 of 0 questions correct (0% correct)

**Online Access Code**  
**A02670146**

Question	Correct Answer	Your Answer	Grade
29	7	✓	m
30	3	✓	m
31	4.5 or 9/2	✓	m
32	1000	✓	m
33	10, 12, 14, or 16	✓	h
34	8/5 or 1.6	✓	h
35	29	✓	h
36	108	50.9	h
37	42	4.2	m
38	8	10	h

**Your Answers**  
See test questions and explanations of the answers at [www.collegeboard.org/quickstart](http://www.collegeboard.org/quickstart).  
You can also ask your counselor for a copy of test book back so you review the questions.

**Key**  
✓ Correct    • Easy  
○ Omitted    ◊ Medium  
✗ Incorrect    h Hard

**Scoring**  
• Correct answer = PLUS 1 PT  
• Omitted answer = 0 POINT  
• Wrong answers to multiple-choice questions = MINUS 1/4 PT  
• Wrong answers to math questions = MINUS 1/4 POINT  
• Points are totaled, then converted to the 30-40 scale.

**Next Steps**  
Go online to see your projected SAT scores, learn how to improve them, and find critical college and career planning information.

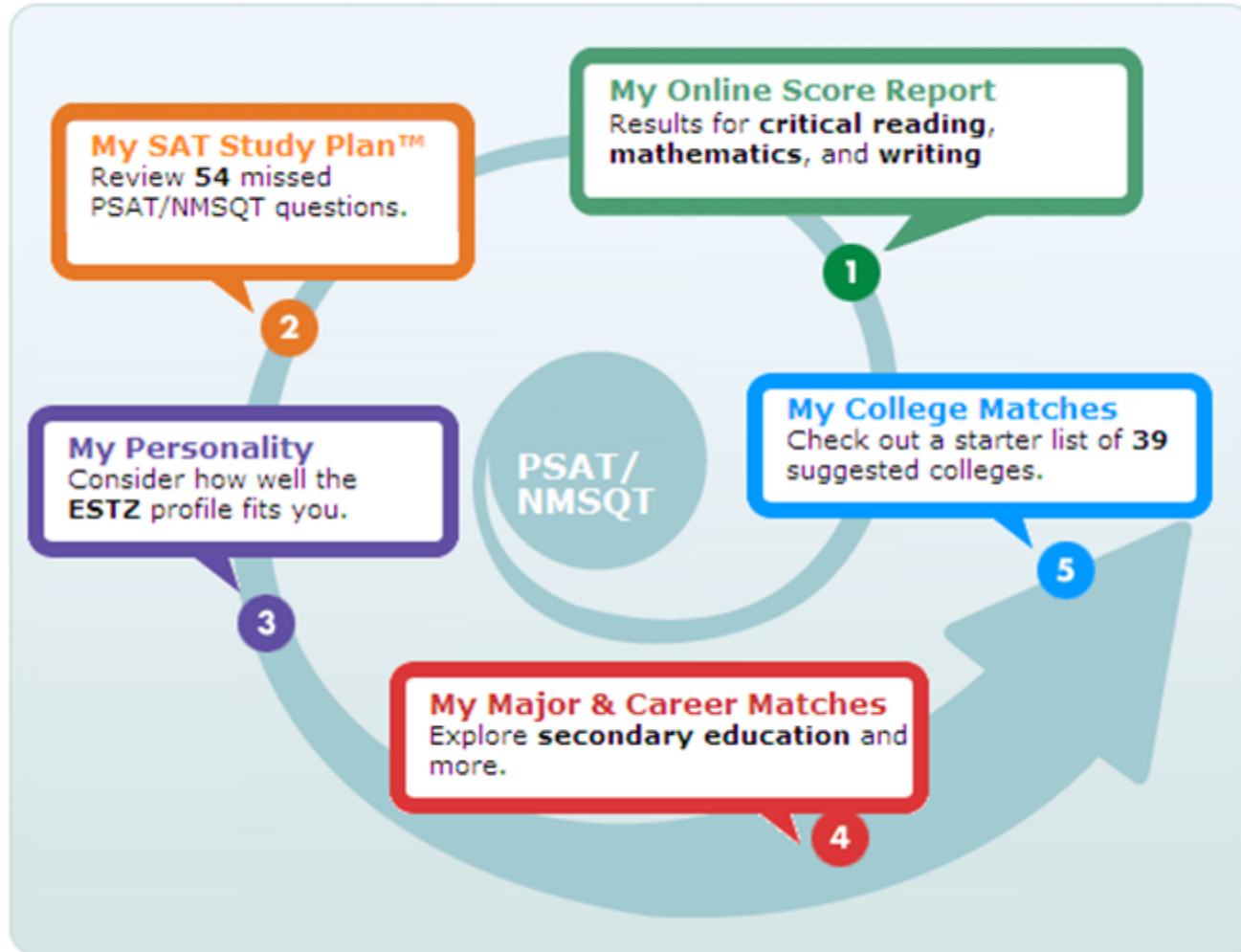
On test day, you told us that you're interested in **Sport & Fitness Administration**! To learn more about college majors, visit [www.collegeboard.org/quickstart](http://www.collegeboard.org/quickstart). There you can also:  
• Learn about related careers  
• Search for colleges  
• Take a personality test

Take the next step today! Go to [www.collegeboard.org/quickstart](http://www.collegeboard.org/quickstart) and sign in using your code below.

**Online Access Code**  
**A02670146P**



# My College QuickStart



# My College QuickStart

## My Online Score Report

- Projected SAT® score ranges
- State percentiles
- You can filter questions
- Questions and answer explanations

My College Quickstart

Home > My Organizer > My College QuickStart > My Online Score Report

### My Online PSAT/NMSQT Score Report

Critical Reading   Mathematics   Writing Skills

**Your Score**

Section Score **50**

Score Range 46 to 54

Projected SAT Score Range **470 to 570**

**National Percentile** You scored higher than 72% of juniors in the nation

**State Percentile** You scored higher than 80% of juniors in your state

**Your Skills**   **Your Answers**

Filter your answers by

-- skills --

-- difficulty --

Correct answers (✓)    Incorrect answers    Omitted

**Submit**

Q#	Correct Answer	Your Answer	Difficulty	Content Skill	Process Skill
01	D	✓	hard	Data, Statistics + Probability	Connections
02		omitted	easy	Number + Operations	Representation
03	C	✓	medium	Algebra + Functions	Problem Solving

# My College QuickStart

## My SAT Study Plan™

- Personalized skills to improve
- SAT practice questions
- An official SAT practice test

### My SAT Study Plan™

[Study Plan Home](#)
[Meet the SAT](#)
[Critical Reading](#)
[Mathematics](#)
[Writing](#)
[Practice Test](#)

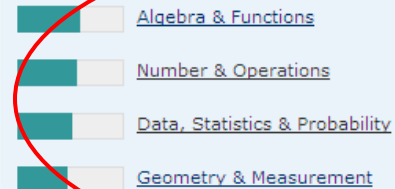
[Review & Practice](#)
[My Skills Feedback](#)
[Get Test-Taking Advice](#)

#### My Skills Feedback

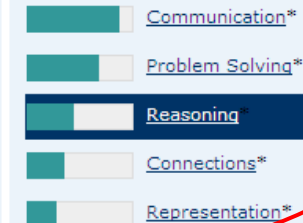
This feedback was created especially for you, based on your PSAT/NMSQT results.

1. Select a skill with a lower performance bar and review the test questions you answered incorrectly. Then try the question again and read the answer explanations.
2. If you find the practice questions too easy, you're probably ready for the next harder level. If you find them too hard, try the next easier level.

#### Content Skills



#### Process Skills



\* These math-only process skill groups were not included on your Score Report *Plus*.

#### Skill Group: Reasoning

3 of 7 correct (1 omitted)

##### Definition

Develop and use mathematical arguments and proofs to explore the truth of conjectures and justify conclusions.

##### Answers

Answers	#	Questions
Omitted	1	37 (view all)
Incorrect	3	16, 26, 35 (view all)
Correct	3	10, 22, 32 (view all)

#### Practice Now

Skills **too easy**? [Try some harder practice questions](#)

Skills **too hard**? [Try some easier practice questions](#)

# My College QuickStart

INSIGHTS

I.D. ME

EXPLORE MAJORS

FIND A COLLEGE

RESEARCH CAREERS

I.D. ME

Introduction

QuickStarts

ORA Personality Profiler®

View My Profile

THE TROUBLESHOOTERS

ISTA

ISFA

ESTA

ESFA

THE TRADITIONALISTS

ESTZ

ESFZ

ISTZ

ISFZ

THE CATALYSTS

INFA

ENFA

ENFZ

INFZ

## The Traditionalists

### ▶ ISFZ The Provider

introverting      feeling  
sensing            organizing

ISFZs are responsible, caring, reserved, and cooperative. As an ISFZ you have a modest style of helping others in orderly and practical ways. You believe it is important to follow rules and laws; similarly, you adhere to routine and prefer to see traditions preserved with little change. You are prone to worry about things beyond your control and may appear to be less confident because of your tendency to become stressed or agitated and not ask for help.

About 6%  
of MyRoad  
participants

You like to be with a few close friends and family members and to offer personal support wherever and whenever needed. You are good at coordinating tasks and activities for everyone but may become overburdened by taking on other people's problems. Likewise, you don't ask for the recognition you would like to have. You are quietly loyal to family, friends, and groups and institutions that are important to you, and you hope others will be as loyal in return. You avoid interpersonal conflict at all costs.

As an ISFZ you are an organized and focused learner who is good at memorizing facts and details related to people. You reliably meet deadlines and obligations. You excel at coordinating and scheduling your own activities and keep yourself and your belongings neat and in good order. You prefer to work on projects and tasks that are useful in a practical way.

### ▶ Your Strengths Include...

- A practical and dependable nature.

# My College QuickStart

## My College Matches

- Starter list of colleges
- Criteria to customize search
- Ability to save searches

**City University of New York: Hunter College**  
New York, New York  
College Board code: 2301

[Add to List](#)
[Compare](#)
[Find Similar](#)
[Map It](#)
[Print Full Profile](#)
[Send to a Friend](#)

<b>At a Glance</b> <a href="#">Deadlines</a>	<b>Admission</b> <a href="#">SAT®, AP®, CLEP®</a>	<b>Cost &amp; Financial Aid</b> <a href="#">Majors</a>	<b>Academics &amp; Support</b> <a href="#">Housing &amp; Campus Life</a>	<b>Sports</b> <a href="#">International Students</a>
---	--	---	---	---

**Main Address**  
 695 Park Avenue  
 New York, NY 10065  
 (212) 772-4000  
[www.hunter.cuny.edu](http://www.hunter.cuny.edu)

**Admission Office**  
 695 Park Avenue  
 New York, NY 10065  
 (212) 772-4490  
[admissions@hunter.cuny.edu](mailto:admissions@hunter.cuny.edu)  
 Contact: William Zlata  
 Director of Admissions

**Type of School**  
 Public  
 Liberal Arts College  
 Four-year  
 Coed  
 Percent applicants admitted: 28%  
 Regionally Accredited  
 Middle States Association of Colleges and Schools  
 College Board member

**Calendar:** Semester  
**Degrees offered:**

- Bachelor's
- Master's

**Setting**  
 Urban setting  
 Very large city (over 500,000)  
 Commuter campus

**Size**  
 Total undergrads: 15,698  
 First-time degree-seeking freshmen: 2,042  
 Degree-seeking undergrads: 14,709  
 Graduate enrollment: 5,560

# My College QuickStart

INSIGHTS
I.D. ME
EXPLORE MAJORS
FIND A COLLEGE
RESEARCH CAREERS

CIVIL ENGINEERING

[Overview](#) | [High School Courses](#) | [College Courses](#) | [Career Connection](#) | [Perspectives](#)

Majors A-Z

My Interest

High
Medium
None

Updated: 8-31-2009

Topics


Construction Engineering & Management

Environmental Engineering

Geological Engineering

Geotechnical Engineering

Mining Engineering



## Overview


The ancient Egyptians built pyramids and levees. The Romans built aqueducts and the Colosseum. The Persians and ancient Greeks undertook massive building projects. Civil engineering has been practiced for thousands of years.

Civil engineers plan, design, build, and repair just about anything you can think of. That includes buildings, bridges, dams, tunnels, highways, stadiums, sewage treatment plants, power plants, airports, and even satellites. These days they're also in demand to repair the damage caused by natural disasters such as earthquakes, hurricanes, and floods. And our crumbling public structures, from bridges to tunnels, all need civil engineers to repair them.

**Civil engineers plan, design, build, and repair just about anything you can think of.**

Civil engineers specialize in different areas. Transportation engineers, for example, tackle problems like traffic jams and air travel safety. Water resources engineers work to control the flow of rivers and ensure clean drinking water.

As a civil engineering major, you'll take classes in several fields before focusing on one. But you'll find there's overlap in some course work. For instance, you'll learn how to build structures that can stand up to earthquakes in both geotechnical and structural engineering. In a geotechnical engineering course, you'll focus on soil structure and foundation design. But when you study structural engineering, you'll be more concerned with designing



## My College QuickStart

**Log in to your personalized account at**

**[www.collegeboard.org/quickstart](http://www.collegeboard.org/quickstart)**